

# \$624,900 - 9517 Linkmeadow Drive, Austin

MLS® #1220102

**\$624,900**

4 Bedroom, 3.00 Bathroom, 2,088 sqft

Residential on 0.24 Acres

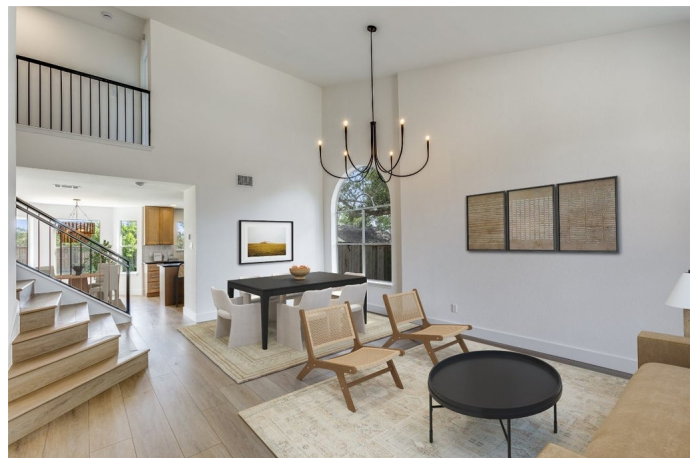
Cherry Creek Sec 16, Austin, TX

The Seller will consider buyer offers asking for concessions! Fully remodeled & move-in ready! This warm, inviting South Austin home offers a larger-than-average yard, fresh landscaping, and stylish updates throughout. Inside youâ€™ll find luxury vinyl plank floors downstairs, new carpet upstairs, and fresh paint inside & out. The gorgeous kitchen features custom cabinetry, granite countertops, a sleek backsplash, and stainless steel appliances. The spacious primary suite boasts a custom shower, standalone soaking tub, and elegant finishes. All bathrooms, fixtures, and hardware are brand new, plus a professionally installed roof for peace of mind. Located in desirable Cherry Creek neighborhood, zoned for top-rated Bowie High School, you can stroll to nearby coffee shops, dining, and neighborhood parksâ€™ while enjoying quick access to top-rated schools, shopping, and commuter routes. This is South Austin living at its best!

Built in 1998

## Essential Information

MLS® #	1220102
Price	\$624,900
Bedrooms	4
Bathrooms	3.00
Full Baths	2
Half Baths	1



Square Footage	2,088
Acres	0.24
Year Built	1998
Type	Residential
Sub-Type	Single Family Residence
Status	Active Under Contract

### **Community Information**

Address	9517 Linkmeadow Drive
Area	10S
Subdivision	Cherry Creek Sec 16
City	Austin
County	Travis
State	TX
Zip Code	78748

### **Amenities**

Utilities	Cable Available, Electricity Connected, Natural Gas Connected, Sewer Connected, Water Connected
Features	Common Grounds/Area
Parking	None
Garage Spaces	2
View	None
Waterfront	None

### **Interior**

Interior	Carpet, Tile, Vinyl
Appliances	Dishwasher, Disposal, Gas Range, Range Hood
Heating	Central
Fireplace	Yes
# of Fireplaces	1
Fireplaces	Family Room, Gas
# of Stories	2
Stories	Two

### **Exterior**

Exterior Features	Private Yard
Lot Description	Cul-De-Sac
Roof	Composition

Construction	Brick, HardiPlank Type
Foundation	Slab

**School Information**

District	Austin ISD
Elementary	Cowan
Middle	Covington
High	Bowie

**Additional Information**

Date Listed	August 15th, 2025
Days on Market	60

**Listing Details**

Listing Office	eXp Realty, LLC
----------------	-----------------

Property Listed by: eXp Realty, LLCListings courtesy of Unlock MLS as distributed by MLS GRIDBased on information submitted to the MLS GRID as of October 15th, 2025 at 8:00am. All data is obtained from various sources and may not have been verified by broker or MLS GRID. Supplied Open House Information is subject to change without notice. All information should be independently reviewed and verified for accuracy. Properties may or may not be listed by the office/agent presenting the information.The Digital Millennium Copyright Act of 1998, 17 U.S.C. Â§ 512 (the "DMCA") provides recourse for copyright owners who believe that material appearing on the Internet infringes their rights under 6 MLS GRID IDX Rules Updated September 16, 2024 U.S. copyright law. If you believe in good faith that any content or material made available in connection with our website or services infringes your copyright, you (or your agent) may send us a notice requesting that the content or material be removed, or access to it blocked. Notices must be sent in writing by email to: Kuper Sotheby's International RealtyThe information being provided is for consumers' personal, non-commercial use and may not be used for any purpose other than to identify prospective properties consumers may be interested in purchasing. Based on information from the Austin Board of REALTORS® (alternatively, from ACTRIS) from October 15th, 2025 at 8:00am CDT. Neither the Board nor ACTRIS guarantees or is in any way responsible for its accuracy. The Austin Board of REALTORS®, ACTRIS and their affiliates provide the MLS and all content therein "AS IS" and without any warranty, express or implied. Data maintained by the Board or ACTRIS may not reflect all real estate activity in the market. All information provided is deemed reliable but is not guaranteed and should be independently verified.

Listing information last updated on October 15th, 2025 at 8:00am CDT