

\$625,000 - 1520 Ben Crenshaw Way 219, Austin

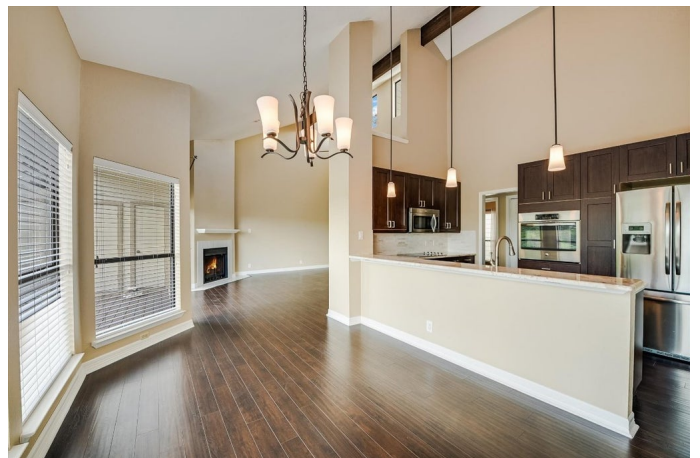
MLS® #2978182

\$625,000

3 Bedroom, 2.00 Bathroom, 1,807 sqft
Residential on 0.26 Acres

Ridge At Lost Creek Condo, Austin, TX

Location, lifestyle, and luxury converge in this beautifully updated 3-bedroom, 2-bath single-level condo in the heart of sought-after Lost Creekâ€™home to award-winning Eanes ISD schools. Perched above the Barton Creek Greenbelt, enjoy sweeping, unobstructed views from the expansive private deck, perfect for morning coffee or evening entertaining. The spacious open floorplan is filled with natural light, accentuated by soaring 20-foot ceilings in the living room and kitchen. A cozy fireplace anchors the living space, creating a warm and inviting atmosphere. Thoughtful updates include luxury vinyl wood flooring, modern lighting and ceiling fans, sleek granite countertops, custom cabinetry, and stainless steel appliances. The oversized primary suite offers a peaceful retreat with ample space for a home office or study nook. Additional features include an attached two-car garage, an abundance of windows, and a short, convenient commute to downtown Austin and Barton Creek Mall. This is effortless greenbelt living at its finestâ€™donâ€™t miss the opportunity to make it yours.



Built in 1983

Essential Information

MLS® #	2978182
Price	\$625,000
Bedrooms	3

Bathrooms	2.00
Full Baths	2
Square Footage	1,807
Acres	0.26
Year Built	1983
Type	Residential
Sub-Type	Condominium
Status	Active

Community Information

Address	1520 Ben Crenshaw Way 219
Area	8W
Subdivision	Ridge At Lost Creek Condo
City	Austin
County	Travis
State	TX
Zip Code	78746

Amenities

Utilities	Electricity Available, Water Available
Features	Playground, Tennis Court(s), Trails/Paths, Park
Parking	Attached, Garage Faces Front, Garage
Garage Spaces	2
View	Hills, Panoramic, Trees/Woods
Waterfront	None

Interior

Interior	Carpet Free
Appliances	Dishwasher, Disposal, Microwave, Refrigerator, Oven
Heating	Central
Fireplace	Yes
# of Fireplaces	1
Fireplaces	Family Room
# of Stories	1
Stories	One

Exterior

Exterior Features	Balcony
Lot Description	Backs to Greenbelt/Park

Roof	Composition
Construction	Masonry
Foundation	Slab

School Information

District	Eanes ISD
Elementary	Forest Trail
Middle	West Ridge
High	Westlake

Additional Information

Date Listed	June 27th, 2025
Days on Market	110

Listing Details

Listing Office	eXp Realty, LLC
----------------	-----------------

Property Listed by: eXp Realty, LLC Listings courtesy of Unlock MLS as distributed by MLS GRID Based on information submitted to the MLS GRID as of October 15th, 2025 at 2:35pm. All data is obtained from various sources and may not have been verified by broker or MLS GRID. Supplied Open House Information is subject to change without notice. All information should be independently reviewed and verified for accuracy. Properties may or may not be listed by the office/agent presenting the information. The Digital Millennium Copyright Act of 1998, 17 U.S.C. Â§ 512 (the "DMCA") provides recourse for copyright owners who believe that material appearing on the Internet infringes their rights under 6 MLS GRID IDX Rules Updated September 16, 2024 U.S. copyright law. If you believe in good faith that any content or material made available in connection with our website or services infringes your copyright, you (or your agent) may send us a notice requesting that the content or material be removed, or access to it blocked. Notices must be sent in writing by email to: Kuper Sotheby's International Realty The information being provided is for consumers' personal, non-commercial use and may not be used for any purpose other than to identify prospective properties consumers may be interested in purchasing. Based on information from the Austin Board of REALTORS® (alternatively, from ACTRIS) from October 15th, 2025 at 2:35pm CDT. Neither the Board nor ACTRIS guarantees or is in any way responsible for its accuracy. The Austin Board of REALTORS®, ACTRIS and their affiliates provide the MLS and all content therein "AS IS" and without any warranty, express or implied. Data maintained by the Board or ACTRIS may not reflect all real estate activity in the market. All information provided is deemed reliable but is not guaranteed and should be independently verified.

Listing information last updated on October 15th, 2025 at 2:35pm CDT