

\$899,453 - 17704 Absinthe Drive, Austin

MLS® #3545895

\$899,453

5 Bedroom, 5.00 Bathroom, 3,793 sqft
Residential on 0.18 Acres

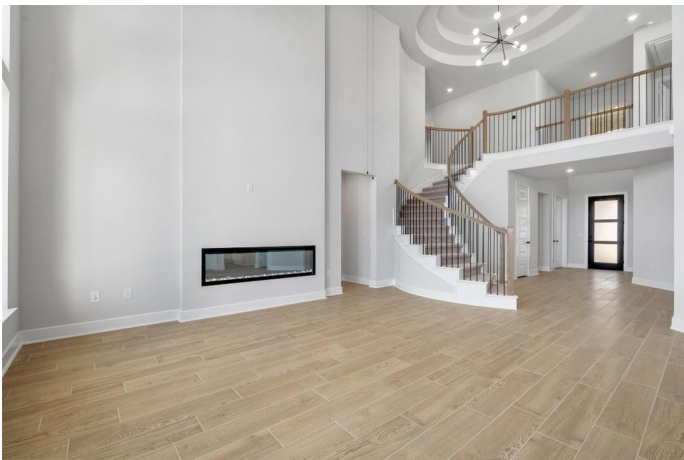
Provence, Austin, TX

MOVE IN READY!! Westin Homes NEW Construction (Cooper, Elevation A) Two story. 5 bedrooms. 4.5 baths. Breathtaking Rotunda Entry, Family room, informal dining room, and study. Kitchen island opens to family room. Primary suite with large double walk-in closets and secondary bedroom on first floor. Three additional bedrooms, spacious game room, and media room on the second floor. Attached 3-car tandem garage. Located in Bee Cave, experience the serenity of suburban living without compromising on urban convenience with Provence. Community amenities include pool with pavilion, scenic overlooks, pocket vineyards, and more. Provence is a great place to call home for all! Come see us at Westin Homes to learn more about Provence today!

Built in 2025

Essential Information

MLS® #	3545895
Price	\$899,453
Bedrooms	5
Bathrooms	5.00
Full Baths	4
Half Baths	1
Square Footage	3,793
Acres	0.18
Year Built	2025



Type	Residential
Sub-Type	Single Family Residence
Status	Active

Community Information

Address	17704 Absinthe Drive
Area	LS
Subdivision	Provence
City	Austin
County	Travis
State	TX
Zip Code	78738

Amenities

Utilities	Underground Utilities
Features	Clubhouse, Park, Pool, Trails/Paths
Parking	Attached, Concrete, Door-Single, Driveway, Garage, Inside Entrance
Garage Spaces	3
View	None
Waterfront	None

Interior

Interior	Carpet, Tile
Appliances	Cooktop, Dishwasher, Disposal, Microwave, Oven
Heating	Natural Gas
Fireplace	Yes
# of Fireplaces	1
Fireplaces	Electric, Family Room
# of Stories	1
Stories	One

Exterior

Exterior Features	Rain Gutters
Lot Description	Back Yard, Sprinklers In Rear, Sprinklers In Front, Few Trees
Roof	Composition, Shingle
Construction	Brick, Stone
Foundation	Slab

School Information

District	Lake Travis ISD
Elementary	Bee Cave
Middle	Bee Cave Middle School
High	Lake Travis

Additional Information

Date Listed	July 23rd, 2025
Days on Market	84

Listing Details

Listing Office	Westin Homes
----------------	--------------

Property Listed by: Westin Homes Listings courtesy of Unlock MLS as distributed by MLS GRID Based on information submitted to the MLS GRID as of October 15th, 2025 at 1:15am. All data is obtained from various sources and may not have been verified by broker or MLS GRID. Supplied Open House Information is subject to change without notice. All information should be independently reviewed and verified for accuracy. Properties may or may not be listed by the office/agent presenting the information. The Digital Millennium Copyright Act of 1998, 17 U.S.C. Â§ 512 (the "DMCA") provides recourse for copyright owners who believe that material appearing on the Internet infringes their rights under 6 MLS GRID IDX Rules Updated September 16, 2024 U.S. copyright law. If you believe in good faith that any content or material made available in connection with our website or services infringes your copyright, you (or your agent) may send us a notice requesting that the content or material be removed, or access to it blocked. Notices must be sent in writing by email to: Kuper Sotheby's International Realty The information being provided is for consumers' personal, non-commercial use and may not be used for any purpose other than to identify prospective properties consumers may be interested in purchasing. Based on information from the Austin Board of REALTORS® (alternatively, from ACTRIS) from October 15th, 2025 at 1:15am CDT. Neither the Board nor ACTRIS guarantees or is in any way responsible for its accuracy. The Austin Board of REALTORS®, ACTRIS and their affiliates provide the MLS and all content therein "AS IS" and without any warranty, express or implied. Data maintained by the Board or ACTRIS may not reflect all real estate activity in the market. All information provided is deemed reliable but is not guaranteed and should be independently verified.

Listing information last updated on October 15th, 2025 at 1:15am CDT