

# \$313,465 - 13420 Desert Orchid Drive, Buda

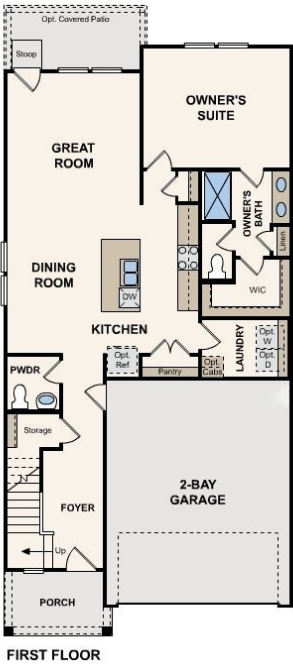
MLS® #3941529

**\$313,465**

4 Bedroom, 3.00 Bathroom, 1,785 sqft  
Residential on 0.13 Acres

Stallion Run, Buda, TX

MLS# 3941529 - Built by Century Communities - Dec 2025 completion! ~ An entertainer's dream, the two-story Lexington dazzles with an inviting kitchenâ€”featuring a large center islandâ€”overlooking a spacious great room and dining area. Secluded at the back of the main floor, you'll also love a private owner's suite, complete with a dual-vanity bath and walk-in closet. Three secondary bedrooms are located upstairsâ€”one boasting a walk-in closet.



Built in 2025

## Essential Information

MLS® #	3941529
Price	\$313,465
Bedrooms	4
Bathrooms	3.00
Full Baths	2
Half Baths	1
Square Footage	1,785
Acres	0.13
Year Built	2025
Type	Residential
Sub-Type	Single Family Residence
Status	Active

## Community Information

Address	13420 Desert Orchid Drive
Area	SE

Subdivision	Stallion Run
City	Buda
County	Travis
State	TX
Zip Code	78610

### Amenities

Utilities	Cable Available, Electricity Available, Natural Gas Available, High Speed Internet Available, Phone Available, Sewer Available, Water Available, Underground Utilities
Features	Common Grounds/Area, Community Mailbox, Street Lights, Curbs
Parking	Attached, Driveway, Garage, Garage Door Opener
Garage Spaces	2
Garages	Garage Door Opener
View	None
Waterfront	None

### Interior

Interior	Carpet, Vinyl
Appliances	Dishwasher, Free-Standing Gas Oven, Disposal, Gas Range, Gas Water Heater, Microwave, Stainless Steel Appliance(s), Vented Exhaust Fan
Heating	Central, Exhaust Fan, Natural Gas
# of Stories	2
Stories	Two

### Exterior

Exterior Features	Lighting, Private Yard
Lot Description	Back Yard, Front Yard, Sprinklers In Rear, Sprinklers In Front, Interior Lot, Landscaped, Native Plants, Sprinkler - Rain Sensor, Sprinklers Automatic, Sprinklers In Ground, Sprinklers On Side, Few Trees, Trees Small Size, Drip Irrigation/Bubblers
Roof	Composition, Shingle
Construction	Attic/Crawl Hatchway(s) Insulated, Blown-In Insulation, Frame, HardiPlank Type, Masonry
Foundation	Slab

### School Information

District	Del Valle ISD
Elementary	Creedmor
Middle	Ojeda

High Del Valle

Additional Information

Date Listed August 8th, 2025  
Days on Market 67

Listing Details

Listing Office HomesUSA.com



Property Listed by: HomesUSA.comListings courtesy of Unlock MLS as distributed by MLS GRIDBased on information submitted to the MLS GRID as of October 14th, 2025 at 4:37pm. All data is obtained from various sources and may not have been verified by broker or MLS GRID. Supplied Open House Information is subject to change without notice. All information should be independently reviewed and verified for accuracy. Properties may or may not be listed by the office/agent presenting the information.The Digital Millennium Copyright Act of 1998, 17 U.S.C. Â§ 512 (the "DMCA") provides recourse for copyright owners who believe that material appearing on the Internet infringes their rights under 6 MLS GRID IDX Rules Updated September 16, 2024 U.S. copyright law. If you believe in good faith that any content or material made available in connection with our website or services infringes your copyright, you (or your agent) may send us a notice requesting that the content or material be removed, or access to it blocked. Notices must be sent in writing by email to: Kuper Sotheby's International RealtyThe information being provided is for consumers' personal, non-commercial use and may not be used for any purpose other than to identify prospective properties consumers may be interested in purchasing. Based on information from the Austin Board of REALTORS® (alternatively, from ACTRIS) from October 14th, 2025 at 4:37pm CDT. Neither the Board nor ACTRIS guarantees or is in any way responsible for its accuracy. The Austin Board of REALTORS®, ACTRIS and their affiliates provide the MLS and all content therein "AS IS" and without any warranty, express or implied. Data maintained by the Board or ACTRIS may not reflect all real estate activity in the market. All information provided is deemed reliable but is not guaranteed and should be independently verified.  
Listing information last updated on October 14th, 2025 at 4:37pm CDT