

\$300,000 - 935 La Posada Dr. 145, Austin

MLS® #4240238

\$300,000

3 Bedroom, 2.00 Bathroom, 1,030 sqft
Residential on 0.06 Acres

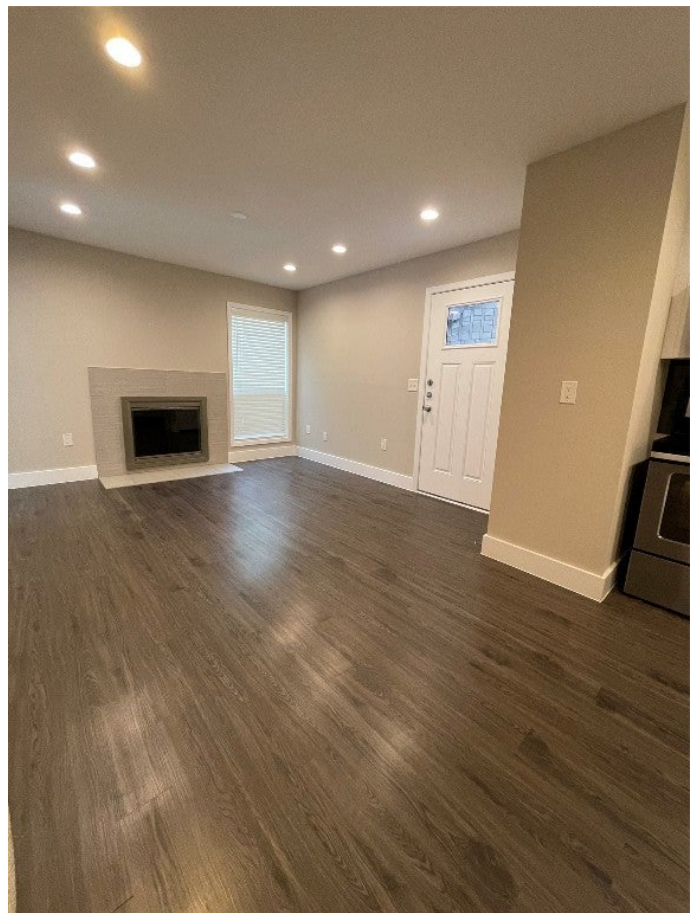
Flats/935 Condos Bldg 4, Austin, TX

There is a pool/workout/community space!!
Two reserved parking spaces !! Off I-35 tucked in a quiet pocket. Near Mueller area, easy commute to so many places !! From 2222/290 drive North on I-35 frontage road, turn right on La Posada Drive (near Papadeauxâ€™s) you will see the complex down around the corner on the right. Turn in the second drive and reserved parking spaces (2) #73 are the reserved spots for this unit (across from the pool). The walkway in front of parking spaces #73 (of building #4) - walk down that walkway to the end and around the corner to the right and the door is tucked in the courtyard. No sign but lockbox on the front door Unit #145. One of the upstairs bedrooms has an additional room off of it (with a window) ! Office, baby suite, student study area, or amazing custom closet ! Living room has a fireplace ! This unit is a must see !

Built in 1980

Essential Information

MLS® #	4240238
Price	\$300,000
Bedrooms	3
Bathrooms	2.00
Full Baths	2
Square Footage	1,030
Acres	0.06
Year Built	1980



Type	Residential
Sub-Type	Condominium
Status	Active

Community Information

Address	935 La Posada Dr. 145
Area	3
Subdivision	Flats/935 Condos Bldg 4
City	Austin
County	Travis
State	TX
Zip Code	78752

Amenities

Utilities	Sewer Connected, Water Connected, Cable Available, Electricity Available, High Speed Internet Available
Features	Fitness Center, Pool, Clubhouse, Community Mailbox
Parking	Assigned, Guest, Off Street
View	None
Waterfront	None

Interior

Interior	Carpet, Laminate
Appliances	Dishwasher, Free-Standing Electric Range, Dryer, Electric Range, Refrigerator, Washer
Heating	Central
Fireplace	Yes
# of Fireplaces	1
Fireplaces	Den, Family Room
# of Stories	2
Stories	Two

Exterior

Exterior Features	No Exterior Steps, Rain Gutters
Lot Description	Landscaped, City Lot, Moderate Trees, Trees Medium Size
Roof	Metal
Construction	HardiPlank Type
Foundation	Slab

School Information

District	Austin ISD
Elementary	Reilly
Middle	Webb
High	Northeast Early College

Additional Information

Date Listed	September 20th, 2023
Days on Market	755

Listing Details

Listing Office	Coldwell Banker Realty
----------------	------------------------



Property Listed by: Coldwell Banker Realty Listings courtesy of Unlock MLS as distributed by MLS GRID Based on information submitted to the MLS GRID as of October 14th, 2025 at 7:00am. All data is obtained from various sources and may not have been verified by broker or MLS GRID. Supplied Open House Information is subject to change without notice. All information should be independently reviewed and verified for accuracy. Properties may or may not be listed by the office/agent presenting the information. The Digital Millennium Copyright Act of 1998, 17 U.S.C. Â§ 512 (the "DMCA") provides recourse for copyright owners who believe that material appearing on the Internet infringes their rights under 6 MLS GRID IDX Rules Updated September 16, 2024 U.S. copyright law. If you believe in good faith that any content or material made available in connection with our website or services infringes your copyright, you (or your agent) may send us a notice requesting that the content or material be removed, or access to it blocked. Notices must be sent in writing by email to: Kuper Sotheby's International Realty The information being provided is for consumers' personal, non-commercial use and may not be used for any purpose other than to identify prospective properties consumers may be interested in purchasing. Based on information from the Austin Board of REALTORS® (alternatively, from ACTRIS) from October 14th, 2025 at 7:00am CDT. Neither the Board nor ACTRIS guarantees or is in any way responsible for its accuracy. The Austin Board of REALTORS®, ACTRIS and their affiliates provide the MLS and all content therein "AS IS" and without any warranty, express or implied. Data maintained by the Board or ACTRIS may not reflect all real estate activity in the market. All information provided is deemed reliable but is not guaranteed and should be independently verified.

Listing information last updated on October 14th, 2025 at 7:00am CDT