

\$285,000 - 2320 Gracy Farms Lane 434, Austin

MLS® #4782211

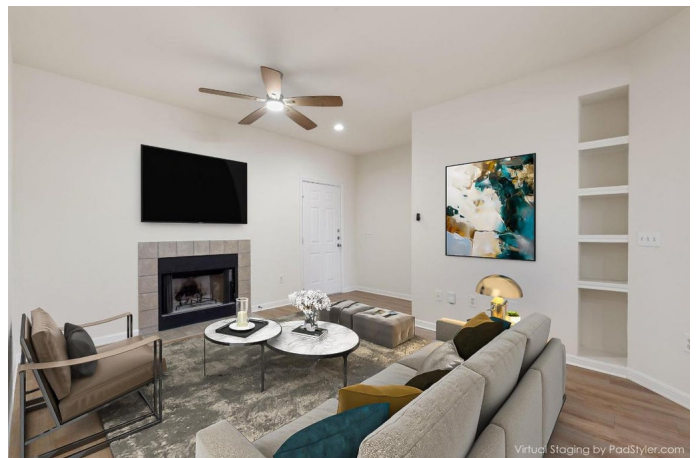
\$285,000

2 Bedroom, 2.00 Bathroom, 1,091 sqft

Residential on 0.09 Acres

Stoneleigh Condo Amd, Austin, TX

SELLER FINANCING AVAILABLE!! This beautifully updated home boasts an extensive list of just-completed renovations, offering a fresh and modern living space. Key improvements include: - ****Kitchen & Bathroom Overhaul****: Brand-new cabinet and drawer fronts with updated hardware, plus stunning Quartz countertops in both the kitchen and bathrooms. - ****Updated Bathroom Features****: New mirrors, updated bathtubs, and a sleek standing shower with a sliding glass door in the primary bathroom. - ****Modern Appliances****: Enjoy the convenience of brand-new kitchen appliances, including a refrigerator, stove, microwave, and dishwasher. - ****New Flooring****: All-new vinyl plank flooring throughout the condo for durability and a contemporary feel. - ****Stylish Finishes****: Replaced door knobs, stops, and bathroom hardware, plus fresh paint on walls, doors, trim, and ceilings. - ****New Window Blinds****: Brand-new window blinds throughout the home for added privacy and style. - ****Upgraded Toilets****: Both bathrooms feature newly replaced toilets for enhanced comfort. - ****New HVAC System****: Installed in 2020 for optimal heating and cooling efficiency. Stoneleigh Condominiums offers Residents the security of a gated entrance, along with access to a community pool, clubhouse with kitchen and fireplace, billiard room, and fitness center. The property backs up to Walnut Creek, providing scenic views and miles of walking trails. Within a 3-mile radius, youâ€™™ll



find prime locations like the Domain, Walnut Creek Park, Austin FC Stadium, major employers, HEB, St. David's Hospital, Top Golf, and numerous dining options.

Built in 2002

Essential Information

MLS® #	4782211
Price	\$285,000
Bedrooms	2
Bathrooms	2.00
Full Baths	2
Square Footage	1,091
Acres	0.09
Year Built	2002
Type	Residential
Sub-Type	Condominium
Status	Active

Community Information

Address	2320 Gracy Farms Lane 434
Area	2N
Subdivision	Stoneleigh Condo Amd
City	Austin
County	Travis
State	TX
Zip Code	78758

Amenities

Utilities	Electricity Available, Water Available
Features	Barbecue, Business Center, Common Grounds/Area, Clubhouse, Community Mailbox, Dog Park, Fitness Center, Gated, Internet Access, Pool
Parking	Carport
View	None
Waterfront	None

Interior

Interior	See Remarks, Vinyl
Appliances	Dishwasher, Exhaust Fan, Electric Water Heater, Free-Standing Electric Oven, Free-Standing Refrigerator, Disposal, Microwave
Heating	Electric
Fireplace	Yes
# of Fireplaces	1
Fireplaces	Living Room
# of Stories	1
Stories	One

Exterior

Exterior Features	Balcony
Lot Description	See Remarks
Roof	Composition
Construction	Masonry
Foundation	Slab

School Information

District	Austin ISD
Elementary	Pillow
Middle	Burnet (Austin ISD)
High	Anderson

Additional Information

Date Listed	September 6th, 2025
Days on Market	38

Listing Details

Listing Office	Weichert-Barton Harris & CO
----------------	-----------------------------

Property Listed by: Weichert-Barton Harris & CO Listings courtesy of Unlock MLS as distributed by MLS GRID Based on information submitted to the MLS GRID as of October 14th, 2025 at 8:01pm. All data is obtained from various sources and may not have been verified by broker or MLS GRID. Supplied Open House Information is subject to change without notice. All information should be independently reviewed and verified for accuracy. Properties may or may not be listed by the office/agent presenting the information. The Digital Millennium Copyright Act of 1998, 17 U.S.C. Â§ 512 (the "DMCA") provides recourse for copyright owners who believe that material appearing on the Internet infringes their rights under 6 MLS GRID IDX Rules Updated September 16, 2024 U.S. copyright law. If you believe in good faith that any content or material made available in connection with our website or services infringes your copyright, you (or your agent) may send us a notice requesting that the content or material be removed, or access to it blocked. Notices must be sent in writing by email to: Kuper Sotheby's International Realty The information being provided is for consumers' personal, non-commercial use and may not be used for any purpose other than to identify prospective properties consumers may be interested in purchasing. Based on information from the Austin Board of REALTORS® (alternatively, from ACTRIS) from October 14th, 2025 at 8:01pm CDT. Neither the Board nor ACTRIS guarantees or is in any way responsible for its accuracy. The Austin Board of REALTORS®, ACTRIS and their affiliates provide the MLS

and all content therein "AS IS" and without any warranty, express or implied. Data maintained by the Board or ACTRIS may not reflect all real estate activity in the market. All information provided is deemed reliable but is not guaranteed and should be independently verified.

Listing information last updated on October 14th, 2025 at 8:01pm CDT