

\$645,000 - 2900 Webberville Road, Austin

MLS® #7466886

\$645,000

3 Bedroom, 1.00 Bathroom, 1,080 sqft

Residential on 0.16 Acres

Lorraine Heights, Austin, TX

Rare opportunity in the heart of East Austin! This corner lot in 78702 offers unmatched potential with dual street frontage and a prime location just minutes from downtown. The property is a true blank canvas â€” perfect for building your vision, whether thatâ€™s a modern single-family home, stylish condos, or an investment project designed for the growing demand in this vibrant area. Larger lot size allows for more flexibility and creative design. Incredible chance to own one of the few residential corner lots left in East Austin.

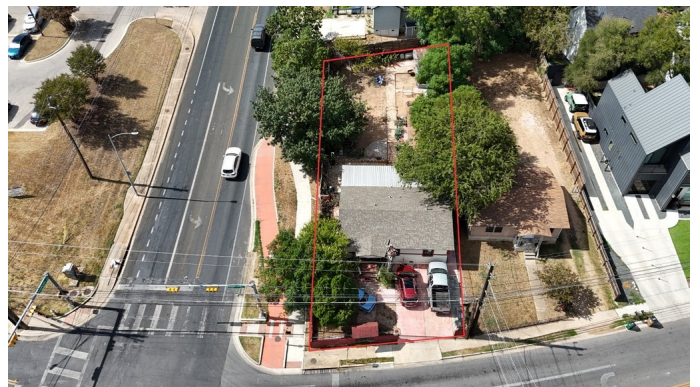
Built in 1959

Essential Information

| | |
|----------------|-------------------------|
| MLS® # | 7466886 |
| Price | \$645,000 |
| Bedrooms | 3 |
| Bathrooms | 1.00 |
| Full Baths | 1 |
| Square Footage | 1,080 |
| Acres | 0.16 |
| Year Built | 1959 |
| Type | Residential |
| Sub-Type | Single Family Residence |
| Status | Active |

Community Information

| | |
|---------|-----------------------|
| Address | 2900 Webberville Road |
| Area | 5 |



| | |
|-------------|------------------|
| Subdivision | Lorraine Heights |
| City | Austin |
| County | Travis |
| State | TX |
| Zip Code | 78702 |

Amenities

| | |
|------------|--|
| Utilities | Cable Connected, Electricity Connected, Natural Gas Connected, Water Connected |
| Features | None |
| Parking | None |
| View | None |
| Waterfront | None |

Interior

| | |
|--------------|--|
| Interior | Wood |
| Appliances | Dryer, Electric Cooktop, Microwave, Refrigerator, Washer |
| Heating | Central |
| # of Stories | 1 |
| Stories | One |

Exterior

| | |
|-------------------|------------------|
| Exterior Features | See Remarks |
| Lot Description | Corner Lot |
| Roof | Shingle |
| Construction | See Remarks |
| Foundation | Pillar/Post/Pier |

School Information

| | |
|------------|------------------------|
| District | Austin ISD |
| Elementary | Oak Springs |
| Middle | Kealing |
| High | Eastside Early College |

Additional Information

| | |
|----------------|-------------------|
| Date Listed | October 2nd, 2025 |
| Days on Market | 12 |

Listing Details

| | |
|----------------|-----------------|
| Listing Office | Spyglass Realty |
|----------------|-----------------|

Property Listed by: Spyglass RealtyListings courtesy of Unlock MLS as distributed by MLS GRIDBased on information submitted to the MLS GRID as of October 14th, 2025 at 4:37pm. All data is obtained from various sources and may not have been verified by broker or MLS GRID. Supplied Open House Information is subject to change without notice. All information should be independently reviewed and verified for accuracy. Properties may or may not be listed by the office/agent presenting the information.The Digital Millennium Copyright Act of 1998, 17 U.S.C. Â§ 512 (the "DMCA") provides recourse for copyright owners who believe that material appearing on the Internet infringes their rights under 6 MLS GRID IDX Rules Updated September 16, 2024 U.S. copyright law. If you believe in good faith that any content or material made available in connection with our website or services infringes your copyright, you (or your agent) may send us a notice requesting that the content or material be removed, or access to it blocked. Notices must be sent in writing by email to: Kuper Sotheby's International RealtyThe information being provided is for consumers' personal, non-commercial use and may not be used for any purpose other than to identify prospective properties consumers may be interested in purchasing. Based on information from the Austin Board of REALTORS® (alternatively, from ACTRIS) from October 14th, 2025 at 4:37pm CDT. Neither the Board nor ACTRIS guarantees or is in any way responsible for its accuracy. The Austin Board of REALTORS®, ACTRIS and their affiliates provide the MLS and all content therein "AS IS" and without any warranty, express or implied. Data maintained by the Board or ACTRIS may not reflect all real estate activity in the market. All information provided is deemed reliable but is not guaranteed and should be independently verified.

Listing information last updated on October 14th, 2025 at 4:37pm CDT