

# \$1,498,999 - 1902 Holly Hill Drive, Austin

MLS® #7640614

**\$1,498,999**

5 Bedroom, 6.00 Bathroom, 4,785 sqft

Residential on 0.31 Acres

Bee Cave Woods, Austin, TX

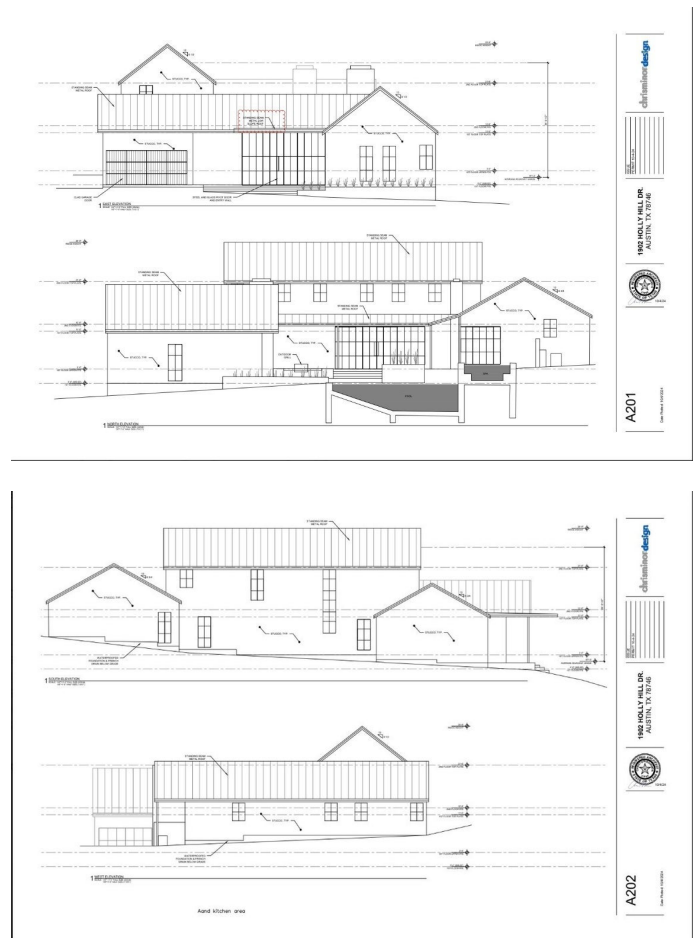
Ready for you to clear the lot, bring your builder and build! Great opportunity to tear down and build on a large, 1/3 acre lot in the heart of Beecave Woods zoned to highly acclaimed Eanes Schools. Comes with fully approved plans by the City of Austin for a 2 story 4785 sqft home with a pool! \*Square footage and bed and bath count listed are in reference to the plans, not the home currently on property. Price includes lot, house currently on property and plans only\* Incredible location - walking distance to schools, coffee, shopping and dining and 5 minute drive to downtown and Zilker Park.

Built in 1982

## Essential Information

MLS® #	7640614
Price	\$1,498,999
Bedrooms	5
Bathrooms	6.00
Full Baths	5
Half Baths	1
Square Footage	4,785
Acres	0.31
Year Built	1982
Type	Residential
Sub-Type	Single Family Residence
Status	Active

## Community Information



Address	1902 Holly Hill Drive
Area	8E
Subdivision	Bee Cave Woods
City	Austin
County	Travis
State	TX
Zip Code	78746

### **Amenities**

Utilities	Electricity Available, Natural Gas Available, Phone Available
Features	Sidewalks
Parking	Attached, Off Street
Garage Spaces	2
View	None
Waterfront	None
Has Pool	Yes

### **Interior**

Interior	Carpet, Laminate, Tile, Wood
Appliances	Dishwasher, Free-Standing Range, Disposal, Gas Water Heater, Microwave, Self Cleaning Oven
Heating	Central
Fireplace	Yes
# of Fireplaces	1
Fireplaces	Family Room, Gas Log
# of Stories	2
Stories	Two

### **Exterior**

Exterior Features	Private Yard
Lot Description	Sprinklers In Rear, Sprinklers In Front, Sprinklers Automatic, Trees Large Size
Roof	Composition
Construction	Masonry
Foundation	Slab

### **School Information**

District	Eanes ISD
Elementary	Cedar Creek (Eanes ISD)

Middle	Hill Country
High	Westlake

## Additional Information

Date Listed	January 10th, 2025
Days on Market	277

## Listing Details

Listing Office	Compass RE Texas, LLC
----------------	-----------------------

Property Listed by: Compass RE Texas, LLC Listings courtesy of Unlock MLS as distributed by MLS GRID Based on information submitted to the MLS GRID as of October 14th, 2025 at 11:51am. All data is obtained from various sources and may not have been verified by broker or MLS GRID. Supplied Open House Information is subject to change without notice. All information should be independently reviewed and verified for accuracy. Properties may or may not be listed by the office/agent presenting the information. The Digital Millennium Copyright Act of 1998, 17 U.S.C. Â§ 512 (the "DMCA") provides recourse for copyright owners who believe that material appearing on the Internet infringes their rights under 6 MLS GRID IDX Rules Updated September 16, 2024 U.S. copyright law. If you believe in good faith that any content or material made available in connection with our website or services infringes your copyright, you (or your agent) may send us a notice requesting that the content or material be removed, or access to it blocked. Notices must be sent in writing by email to: Kuper Sotheby's International Realty The information being provided is for consumers' personal, non-commercial use and may not be used for any purpose other than to identify prospective properties consumers may be interested in purchasing. Based on information from the Austin Board of REALTORS® (alternatively, from ACTRIS) from October 14th, 2025 at 11:51am CDT. Neither the Board nor ACTRIS guarantees or is in any way responsible for its accuracy. The Austin Board of REALTORS®, ACTRIS and their affiliates provide the MLS and all content therein "AS IS" and without any warranty, express or implied. Data maintained by the Board or ACTRIS may not reflect all real estate activity in the market. All information provided is deemed reliable but is not guaranteed and should be independently verified.

Listing information last updated on October 14th, 2025 at 11:51am CDT