

\$969,900 - 17709 Absinthe Drive, Austin

MLS® #8389921

\$969,900

4 Bedroom, 3.00 Bathroom, 3,115 sqft
Residential on 0.18 Acres

Provence - 60', Austin, TX

MLS# 8389921 - Built by Drees Custom Homes - Jan 2026 completion! ~ New 4-Bedroom home in Austin, TX! The Bristol is a gorgeous plan that uses every square foot of space as if it were important. The large foyer welcomes you into the spacious family room and beautiful gourmet kitchen, which are separated by a large kitchen island. The luxurious primary suite will give you all the privacy you desire, while the spa-like bathroom will melt your troubles away! Upstairs, you will find an ample game room and media space along with two additional bedrooms making it the perfect place for a teen retreat, or for guests to relax in their own private space. Visit Provence today to discover this amazing home!

Built in 2025

Essential Information

MLS® #	8389921
Price	\$969,900
Bedrooms	4
Bathrooms	3.00
Full Baths	3
Square Footage	3,115
Acres	0.18
Year Built	2025
Type	Residential
Sub-Type	Single Family Residence



Status Active

Community Information

Address 17709 Absinthe Drive
Area SC
Subdivision Provence - 60'
City Austin
County Travis
State TX
Zip Code 78738

Amenities

Utilities Cable Available, High Speed Internet Available, Phone Available, Water Connected, Underground Utilities
Features Common Grounds/Area, Clubhouse, Community Mailbox, Planned Social Activities, Trails/Paths
Parking Attached, Direct Access, Door-Single, Driveway, Garage Faces Front, Garage, Garage Door Opener, Inside Entrance, Kitchen Level, Lighted, Tandem
Garage Spaces 3
Garages Garage Door Opener
View None
Waterfront None

Interior

Interior Carpet, Tile, Wood
Appliances Built-In Gas Range, Built-In Oven, Cooktop, Double Oven, Dishwasher, Exhaust Fan, Microwave, Oven
Heating Central, Exhaust Fan, Fireplace(s), Zoned
Fireplace Yes
of Fireplaces 1
Fireplaces Family Room, Gas
of Stories 2
Stories Two

Exterior

Exterior Features Balcony, Exterior Steps, Private Yard
Lot Description Sprinklers In Rear, Sprinklers In Front, Sprinkler - Rain Sensor, Sprinklers Automatic, Sprinklers In Ground, Sprinklers Manual, Sprinklers On Side, Sprinklers Partial

Roof	Composition, Shingle
Construction	Attic/Crawl Hatchway(s) Insulation HardiPlank Type, Masonry, Concrete
Foundation	Slab

School Information

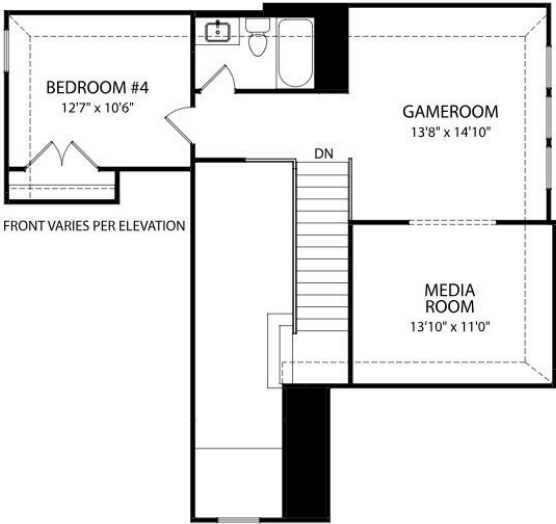
District	Lake Travis ISD
Elementary	Bee Cave
Middle	Bee Cave Middle School
High	Lake Travis

Additional Information

Date Listed	August 11th, 2025
Days on Market	64

Listing Details

Listing Office	HomesUSA.com
----------------	--------------



Property Listed by: HomesUSA.comListings courtesy of Unlock MLS as distributed by MLS GRIDBased on information submitted to the MLS GRID as of October 14th, 2025 at 4:37pm. All data is obtained from various sources and may not have been verified by broker or MLS GRID. Supplied Open House Information is subject to change without notice. All information should be independently reviewed and verified for accuracy. Properties may or may not be listed by the office/agent presenting the information.The Digital Millennium Copyright Act of 1998, 17 U.S.C. Â§ 512 (the "DMCA") provides recourse for copyright owners who believe that material appearing on the Internet infringes their rights under 6 MLS GRID IDX Rules Updated September 16, 2024 U.S. copyright law. If you believe in good faith that any content or material made available in connection with our website or services infringes your copyright, you (or your agent) may send us a notice requesting that the content or material be removed, or access to it blocked. Notices must be sent in writing by email to: Kuper Sotheby's International RealtyThe information being provided is for consumers' personal, non-commercial use and may not be used for any purpose other than to identify prospective properties consumers may be interested in purchasing. Based on information from the Austin Board of REALTORS® (alternatively, from ACTRIS) from October 14th, 2025 at 4:37pm CDT. Neither the Board nor ACTRIS guarantees or is in any way responsible for its accuracy. The Austin Board of REALTORS®, ACTRIS and their affiliates provide the MLS and all content therein "AS IS" and without any warranty, express or implied. Data maintained by the Board or ACTRIS may not reflect all real estate activity in the market. All information provided is deemed reliable but is not guaranteed and should be independently verified.

Listing information last updated on October 14th, 2025 at 4:37pm CDT