

\$1,900,000 - 2228 Williams Lakeshore Dr, Kingsland

MLS® #6296894

\$1,900,000

4 Bedroom, 4.00 Bathroom, 2,411 sqft
Single-Family on 0.43 Acres

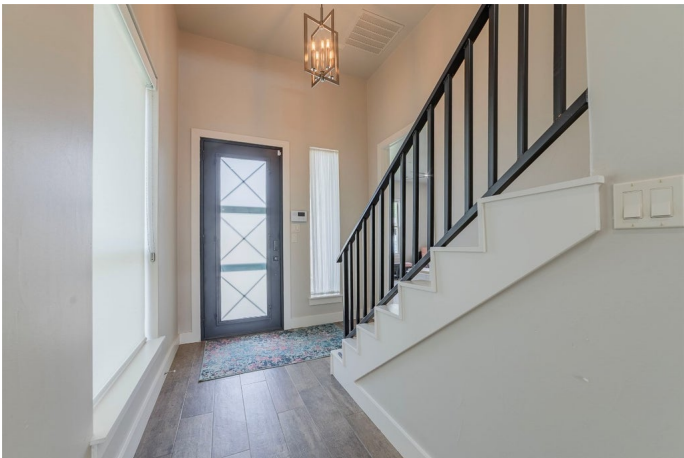
Shirley Williams, Kingsland, TX

Comprehensive Opportunity to Own on the Coveted Colorado Arm of Lake LBJ. Three Open Waterfront Homes together. Two Homes Built in 2018, 2228 Williams Lakeshore 2411 SF & 198â€™™ Waterfront & 2238 Williams Lakeshore 2916 SF & 42â€™™ Waterfront, Open Concept, Large Living Area, Beautiful Kitchen, 4 Bedrooms, 3 ½ Baths, Master on Main Level, Full Covered Porches Across the Back, Hot Tub, Facing Northeast, Walkways to Incredible Waterside Infrastructure, Boat Dock, Jet Ski Racks, Flat and Flexible Lower Back Yard at Waterside, Incredible Views up and Down the Lake LBJ, Can be used as Short Term Rental, Fully Furnished, 2 Car Carport Attached to Large Enclosed Storage Area, Numerous Parking in Front Driveway, On Kingsland MUD, So No septic or LCRA, Sold Furnished, The work has been done on this one...Come enjoy!!

Built in 2018

Essential Information

MLS® #	6296894
Price	\$1,900,000
Bedrooms	4
Bathrooms	4.00
Full Baths	3
Half Baths	1
Square Footage	2,411
Acres	0.43



Year Built	2018
Type	Single-Family
Sub-Type	Single Family Residence
Status	Active

Community Information

Address	2228 Williams Lakeshore Dr
Area	LL
Subdivision	Shirley Williams
City	Kingsland
County	Llano
State	TX
Zip Code	78639

Amenities

Utilities	Cable Available, Electricity Connected, Phone Available, Sewer Connected, Water Connected, Above Ground Utilities, Natural Gas Not Available
Features	Fishing, Lake
Parking	Concrete, Additional Parking, Carport, Kitchen Level
View	Hills,Lake,Lake LBJ
Is Waterfront	Yes
Waterfront	Boat Ramp/Lift Access, Lake Front, Waterfront

Interior

Interior	Tile
Appliances	Cooktop, Dryer, Dishwasher, Electric Oven, Microwave, Oven, Refrigerator, Range Hood, Washer, Electric Cooktop, Wine Cooler, Wine Refrigerator
Heating	Central, Hot Water, Electric
# of Fireplaces	1
Fireplaces	Gas, Living Room
# of Stories	2
Stories	Two

Exterior

Exterior Features	Boat Lift, Dock
Lot Description	Back Yard, Gentle Sloping, Interior Lot, Landscaped, Sprinklers Automatic, Few Trees, Trees Large Size, Views
Roof	Asbestos Shingle

Construction	HardiPlank Type, Masonite
Foundation	Slab

School Information

District	Llano ISD
Elementary	Packsaddle
Middle	Llano
High	Llano

Additional Information

Date Listed	May 2nd, 2025
Days on Market	118

Listing Details

Listing Agent	Bruce Jones
Listing Office	Lake Homes Realty, LLC

The information being provided by the Highland Lakes Association of REALTORS, Inc. is exclusively for consumers' personal, non-commercial use, and it may not be used for any purpose other than to identify prospective properties consumers may be interested in purchasing. The data is deemed reliable but is not guaranteed accurate by the MLS.
Listing information last updated on October 14th, 2025 at 4:24pm CDT